

DESCRIPTION AND USE

LEXCAN HI-FLEX EPDM LEXPAD 300 WALKWAY PAD is a rubber roof traffic pad designed to protect roofing membranes from punctures or damage caused by pedestrian traffic or maintenance work on the roof. The pads are ideal around roof mounted equipment, hatches, ventilators or other areas where work crews require ready access.

HI-FLEX EPDM LEXPAD 300 WALKWAY PAD provides ideal traffic walkways on unballasted LEXCAN roofing systems. These systems include:

- Adhesive Adhered EPDM Roofing System
- Asphalt Adhered EPDM Roofing System
- Mechanically Fastened EPDM Roofing System

FEATURES AND BENEFITS

Durable - stands up to all weather conditions and years of heavy use.

Superior Traction - raised anti-slip design ensures superior traction in all weather conditions.

Easy to Apply - easily positioned and applied to the finished roofing surface.

Rounded Corners - helps protect against corners peeling up from scuffing or abrasion.

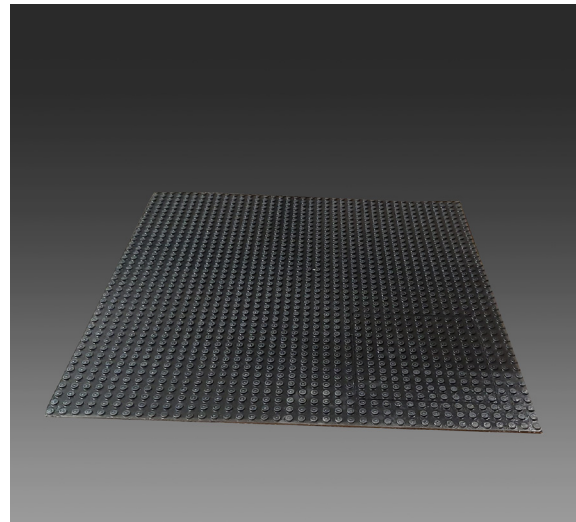
TECHNICAL DATA

Typical Properties and Characteristics		
Thickness:	7.94 mm (5/16")	Tolerance of +/- 0.51 mm (0.020")
Length:	762 mm (30")	Tolerance of +/- 6.35 mm (0.250")
Width:	762 mm (30")	Tolerance of +/- 6.35 mm (0.250")
Weight per Unit:	3.63 kg (8 lbs.)	-

INSTALLATION

Application with Primer and Seam Tape*

1. Plan the layout of the walkway system before beginning installation. HI-FLEX EPDM LEXPAD 300 WALKWAY PADS must be separated a minimum of 25 mm (1") to permit water drainage. HI-FLEX EPDM LEXPAD 300 WALKWAY PAD should not be positioned over membrane seams. Leave a minimum of 25 mm (1") clearance on each side of the seam.
2. Membrane surfaces to receive HI-FLEX EPDM LEXPAD 300 WALKWAY PADS must be clean, dry and free from loose debris or dirt. If necessary, clean the surface with LEXCAN SINGLE PLY MEMBRANE CLEANER.



3. Mark two chalk lines on the membrane 762 mm (30") apart to indicate the outside edges of the walkway system. Mark a third line centred in between these two lines.
4. Using LEXCAN PA-100 EPDM AND TPO MEMBRANE PRIMER, clean 101.6 mm (4") wide strips of membrane in from the outside chalk lines and a 101.6 mm (4") wide strip centred over the middle chalk line (this chalk line will be erased by this process). Clean corresponding areas on each HI-FLEX EPDM LEXPAD 300 WALKWAY PAD to be used in the walkway system. Apply HI-FLEX EPDM PA-100 PLUS PRIMER to the membrane and the back of the walkway pads, in strict accordance with its application instructions and let it flash off.
5. Apply three rows of HI-FLEX EPDM T-325 SEAM TAPE to the membrane over the cleaned areas. The outside edge of the two outside tape rows should line up with the outside chalk lines. The third row should be centred in the middle. Apply the tape in strict accordance with the product's application instructions.
6. Remove the poly/paper release from the three rows of seam tape. Line up the cleaned areas on each HI-FLEX EPDM LEXPAD 300 WALKWAY PAD and neatly position them over the three rows. Press down and walk on the pad over the taped areas to ensure complete contact. Repeat for each subsequent pad, ensuring proper spacing between the pads.

* LEXCAN has alternative application methods for HI-FLEX EPDM LEXPAD 300 WALKWAY PAD. Contact LEXCAN for further information.