

**SONOpan II Panel**

0 % VOC (g / l)

100 % recycled and recyclable wood fiber

Made in Canada

LEED Information.

Materials and Resources;

MR 3, MR 4, MR 5, MR 6.

Indoor Environmental Quality;  
IEQ 1, IEQ 2.

Innovation & Design Process;

IDP 1.

**SONOpan II soundproofing panel**

Properties	Requirements	Nominal value
Density	ASTM D-1037	14 lbs / ft <sup>3</sup>
Transverse load at rupture	ASTM C-209	15 lbs
Tensile strength parallel to surface	ASTM C-209	60.7 lbs / in <sup>2</sup>
Water absorption	ASTM C-209	4 % P / V max.
Linear expansion	ASTM C-209	13 %
Compressive strength (10 % deformation)	ASTM C-165	20 lbs / in <sup>2</sup>
Thermal value (rsi)	ASTM C-518	R = 2.45 (RSI = 0.43)

**Physical properties**

Dimensions:	48 in. x 96 in. (1.22 m x 2.44 m)
Sq. feet per panel:	32 ft <sup>2</sup> (2.97 m <sup>2</sup> )
Thickness:	3/4 in. (19.05 mm)
Number of panels / skid:	65 panels

**Ecological properties**

0 % - COV (g / l.) - Volatile organic compounds

100% recycled and recyclable wood fiber

For additional information ;  
Customer support : 1 800 561.4279  
Website : [www.mslfibre.com](http://www.mslfibre.com)

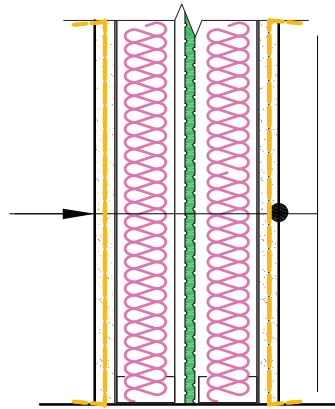
[infoplus@materiauxspecl.com](mailto:infoplus@materiauxspecl.com)

Developed and  
manufactured in  
**Canada** 

**SONOpan II Benefits**

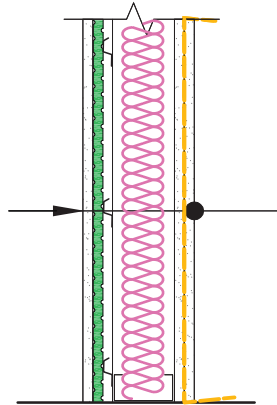
- STC ≥ 28
- R-value = 2.45
- Acoustic barrier
- Light and easy to cut
- Several densities within the same panel to absorb additional frequency bands

**Partition wall FSTC ≥ 66**



- 5/8" type X drywall
- RefleXor thermo-acoustic membrane
- 5/8" type X drywall
- 3 5/8" metal studs or 2" x 4" wood studs screwed at 16" o.c. with insulation wool batts
- 1/2" min. air space (variable)
- SONOpan II
- 3 5/8" metal studs or 2" x 4" wood studs screwed at 16" o.c. with insulation wool batts
- 5/8" type X drywall
- RefleXor thermo-acoustic membrane
- 5/8" type X drywall

**Condo to corridor wall FSTC ≥ 58**



- 5/8" type X drywall
- SONOpan
- Resilient channels
- 3 5/8" metal studs or 2" x 4" wood studs screwed at 16" o.c. with insulation wool batts
- 5/8" type X drywall
- RefleXor thermo-acoustic membrane
- 5/8" type X drywall

For additional information ;  
Customer support : 1 800 561.4279  
Website : [www.mslfibre.com](http://www.mslfibre.com)

[infoplus@materiauxspecl.com](mailto:infoplus@materiauxspecl.com)

Developed and  
manufactured in  
**Canada**

