



Sto-Ecoshapes Designer

Prefabricated Render Finish Shapes

With Sto-Ecoshapes, your creativity is truly limited only by your imagination. Whether you are designing a building with a rainscreen cladding, stucco or continuous insulation system, Sto-Ecoshapes can provide the finishing touch that gives your design a one-of-a-kind look. The details, illustrations, general technical information and drawings contained in this brochure are merely examples used to capture the basic functions of this innovative product.

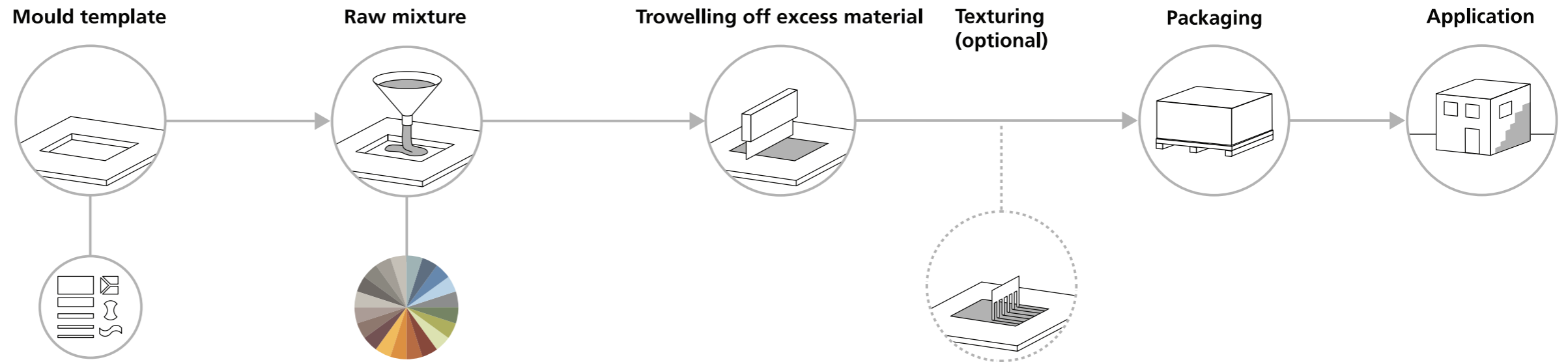
Prefabricated render finish shapes

Sto-Ecoshapes are made from 90% -plus mineral components. When it comes to the manufacturing process, you decide on the shape, color, and texture of the render elements.



Manufacturing process

A glimpse into the simplified manufacturing process highlights how customizable Sto-Ecoshapes is. First, the shape (template) and color (raw compound) of the render elements can be customized. In the subsequent manufacturing process, the surface of the compound can be given a customized texture while it is still wet using various tools (texturing). There are also additional opportunities to customize the design when applying the shapes to the building.



Sustainable facade cladding

- Over 90% of the raw material for Ecoshapes consists of mineral components.
- The material is then carefully dried at 60° to form the final render elements.
- The material is light weight, which means a single truckload can supply enough finished Ecoshapes for 64,500 square feet of facade surface.

Mould template

The template is produced in accordance with the designer's specifications.

Factors influencing the design:

- Shape
- Format (maximum format: 840 mm x 420 mm x 8 mm, larger formats available upon request)

Raw mixture

The raw material, a compound similar to render, is placed into the template.

Factors influencing the design:

- Color

Trowelling off excess material

To achieve a uniform layer thickness, the raw compound is trowelled off over the template.

Texturing

The wet compound is textured using various tools. Additive color shades and granulates (special effect aggregates made from glass, silicon carbide, etc.) can be added upon request for further customization.

Factors influencing the design:

- Tools
- Direction of tool use (linear, in a criss-cross pattern)

Packaging

The prefabricated shapes are packed in suitable packaging (in accordance with the planned laying pattern if applicable). One truck can transport enough material to cover a 64,583 ft² (6,000 m²) project.

Application

The prefabricated shapes are applied to the building.

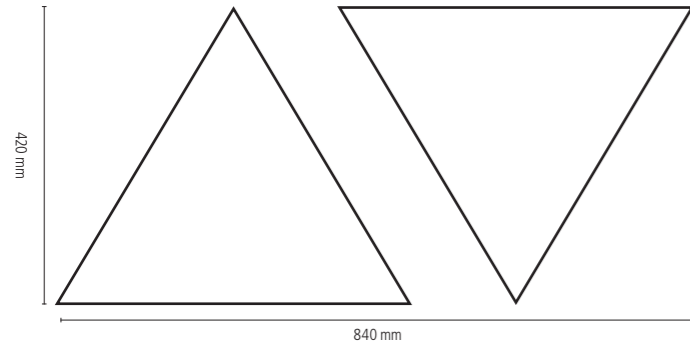
Factors influencing the design:

- Full-surface use
- Use in specific areas
- Color shade of joint (low-contrast or rich in contrast)
- Joint width

Design parameters

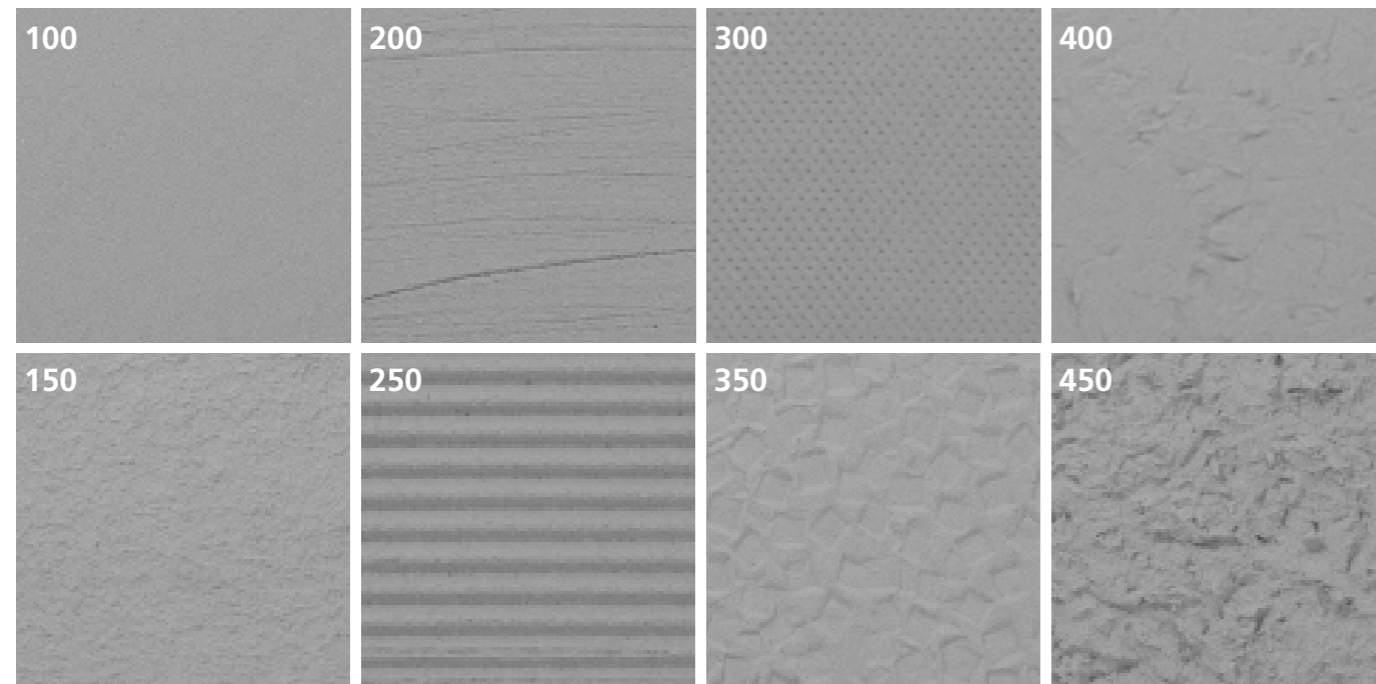
Shape

Maximum format 840 mm x 420 mm



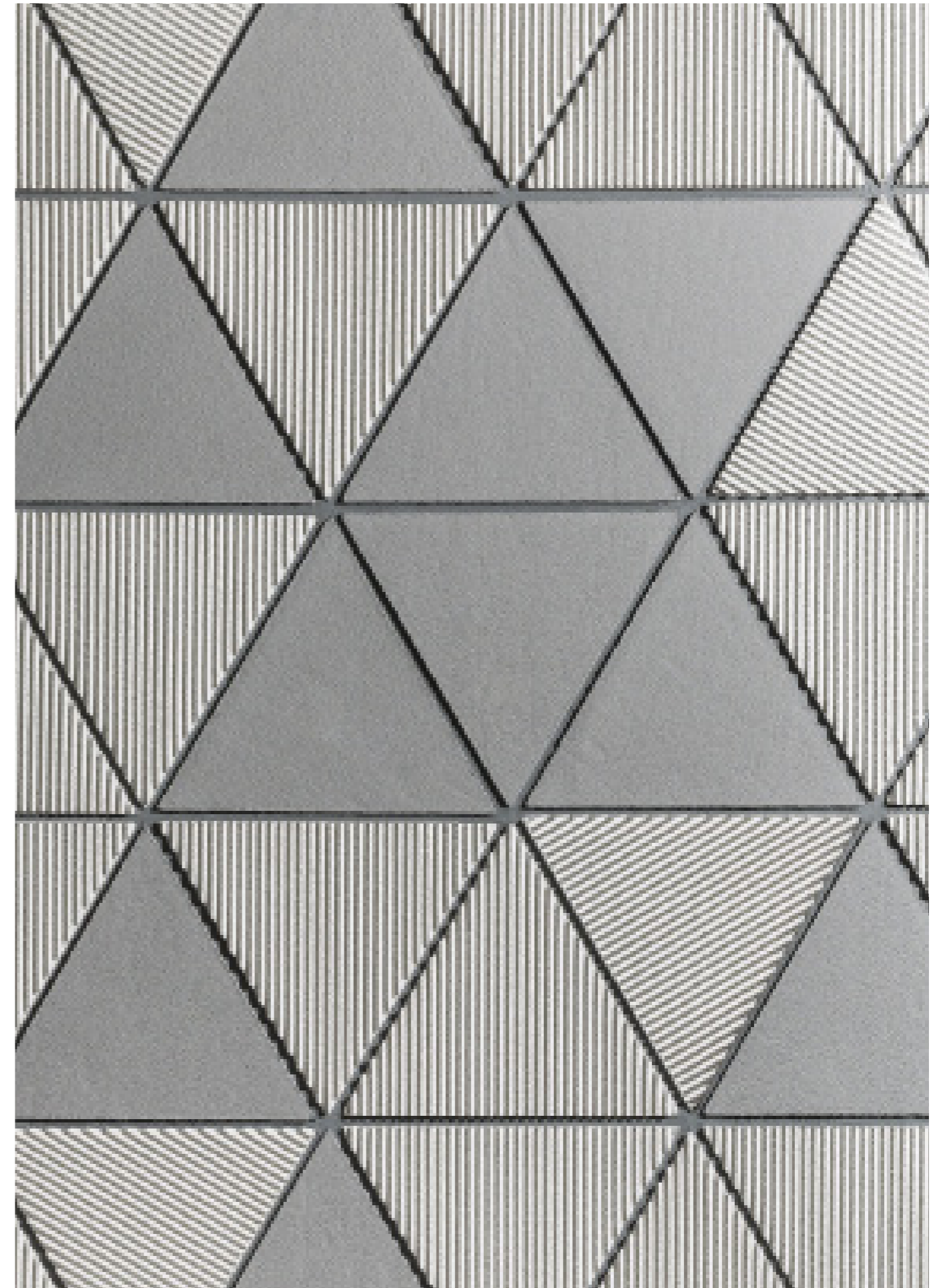
Texture

Eight basic textures; individual textures available on request



Color

The raw compound of the Sto-Ecoshapes and joint material are tintable.



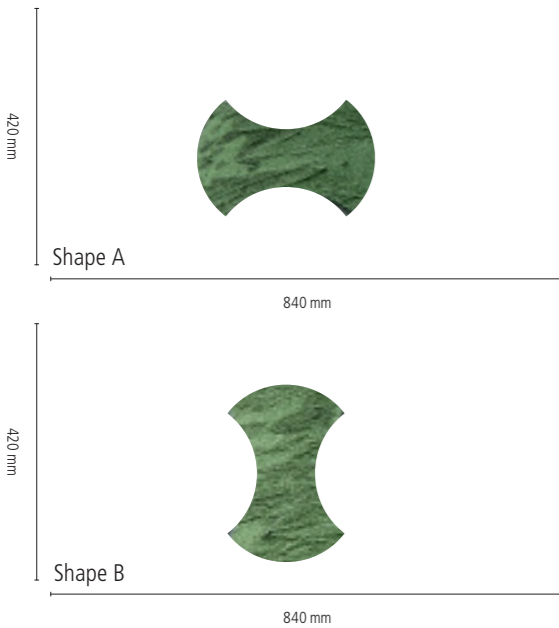
An example of customized design using the parameters of shape (triangle), texture (100 and 250), and color (Sto-Ecoshapes: AC 16282 and AC 16286; joint material: AC 16280)

Reference Project: Polychrome, patterned finish

With Sto-Ecoshapes, designers can achieve a broad range of arresting effects -- from symmetrical to whimsical. This representative project in Tilburg, Netherlands consists of four residential units with a "statement" facade. Its surface is made up of convex and concave Ecoshapes set at 90 degrees to one another with a striking grass-colored surface. The jigsaw-puzzle pattern is enhanced by the light gray wavy joints, and in an interesting touch, the flexible elements of the cladding extend over the rounded edges of the building. It all adds up to a harmonious whole.

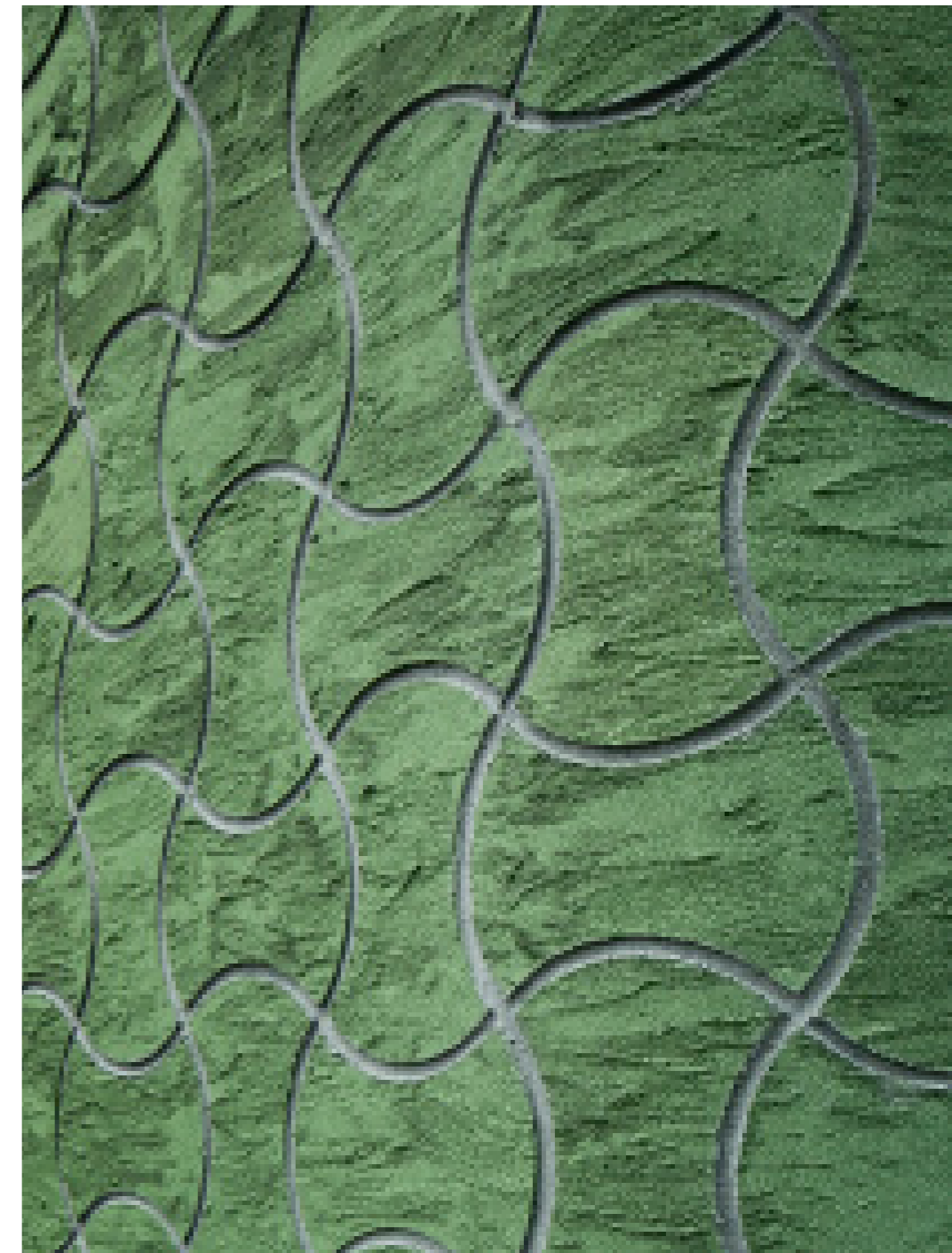
"Zuringhof" residential building, Tilburg, NL

Architects:
van den hout & kolen architecten, NL-Tilburg



Shape A: 198 mm x 290 mm
Shape B: 290 mm x 198 mm
Texture: 100 + additive color shades (non-linear)
Arrangement: polychrome, pattern-based use

8 | Application



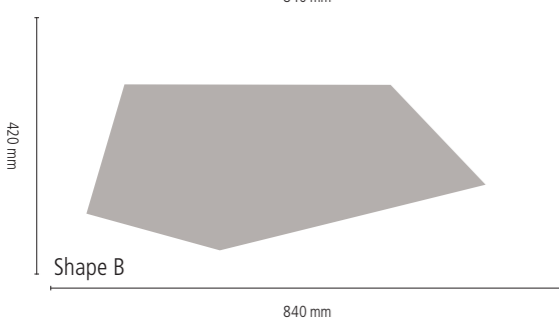
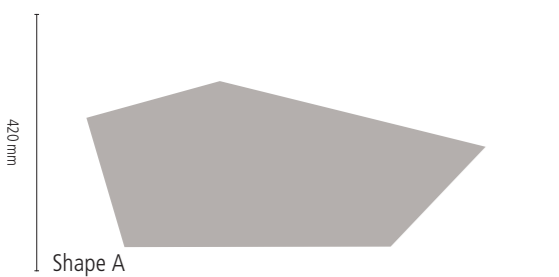
Reference Project:

Polychrome, patterned
Sto-Ecoshapes combined
with standard finish

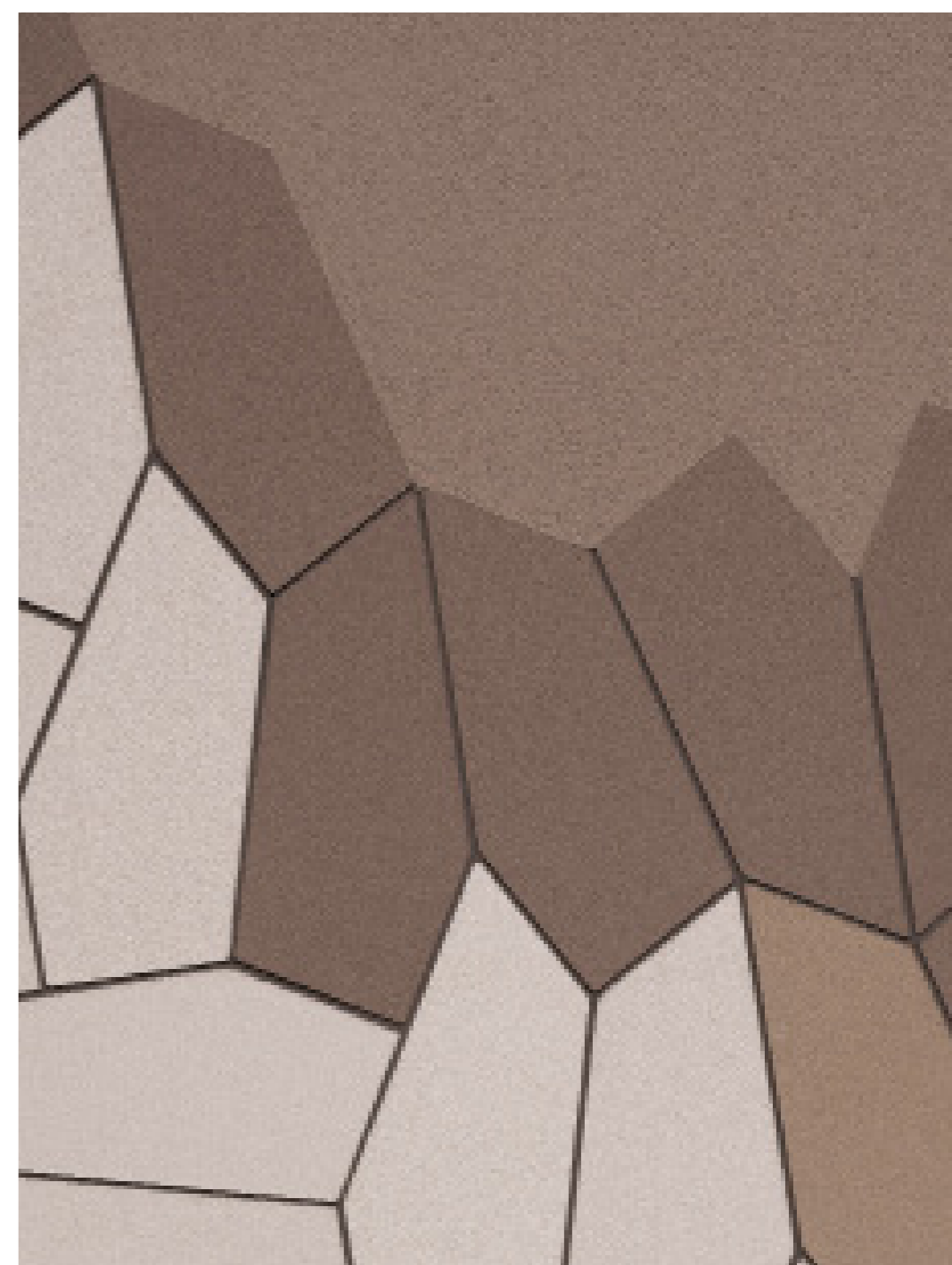
This school in Lochem, NL demonstrates how a rendered facade can be combined with Sto-Ecoshapes to achieve a distinctive look. The architects have combined a smooth texture with warm, light-brown shades in a scale-like design. The pentagonal shapes can be arranged in a variety of ways, making the facade come alive. The overall appearance is further accentuated by the different color combinations and discernible joints. Because they are flexible, the Sto-Ecoshapes were easy to apply to the curvy two-story structure.

“De Garve” educational building, Lochem, NL.

Architects:
19 Het Atelier, NL-Zwolle

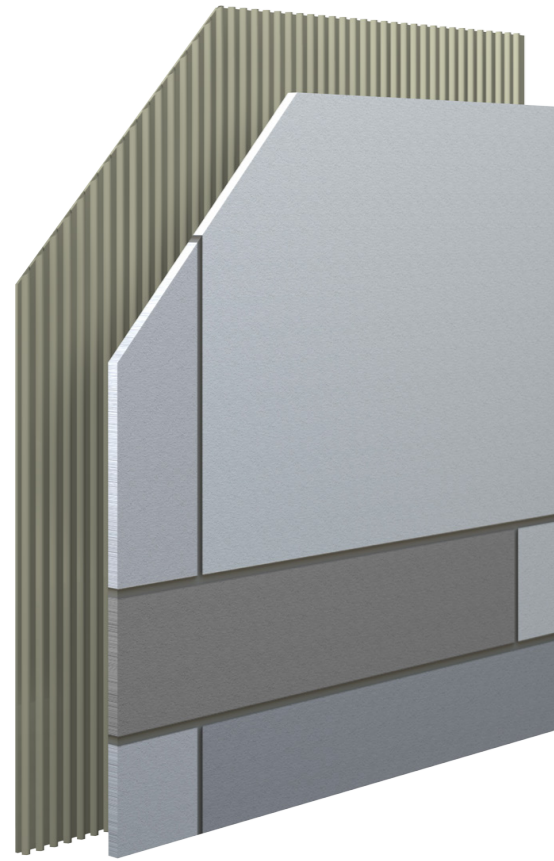


Shape A: 650 mm x 275 mm
Shape B: 650 mm x 275 mm
Texture: 100
Arrangement: polychrome,
pattern-based finish in
specific areas



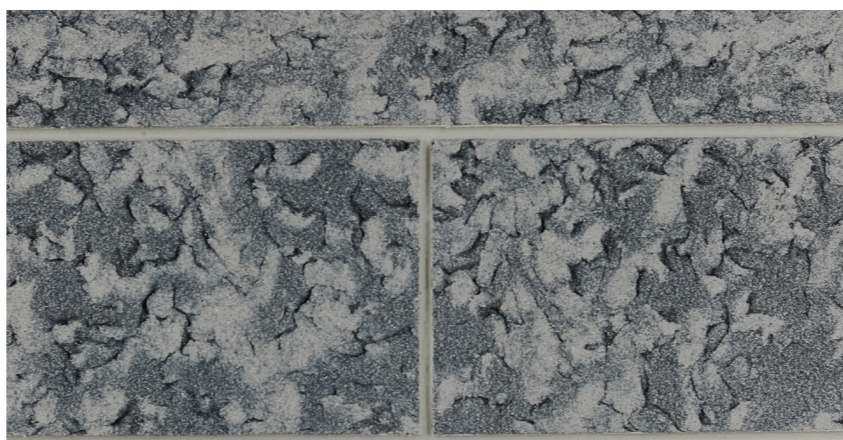
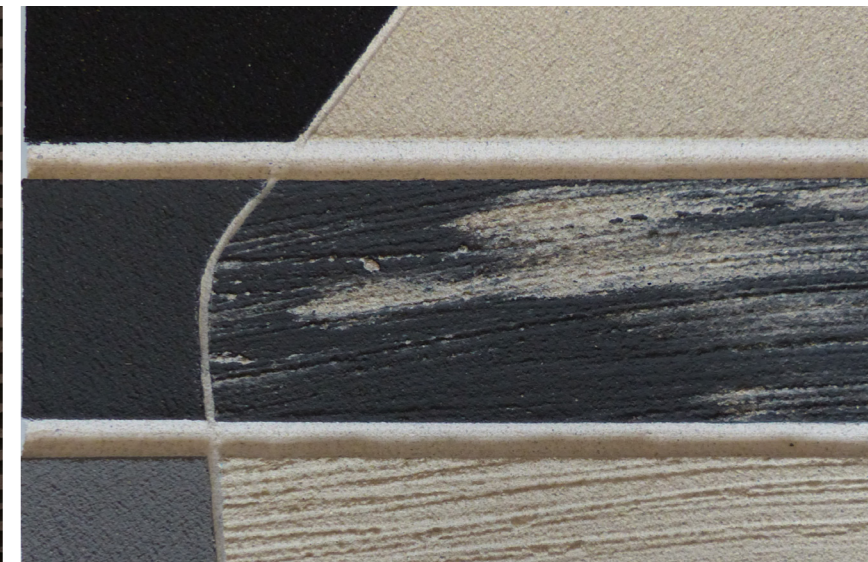
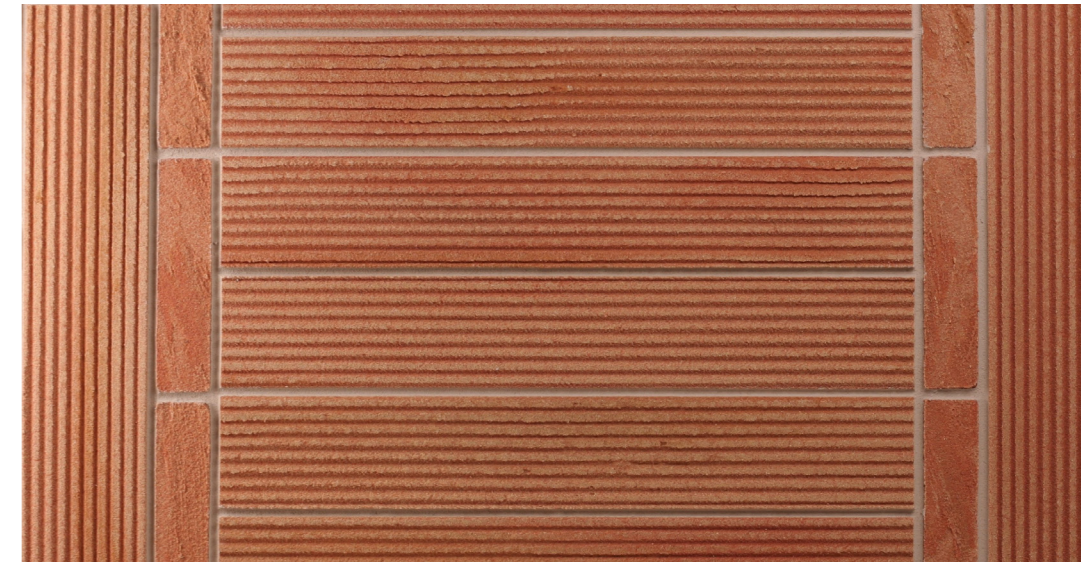
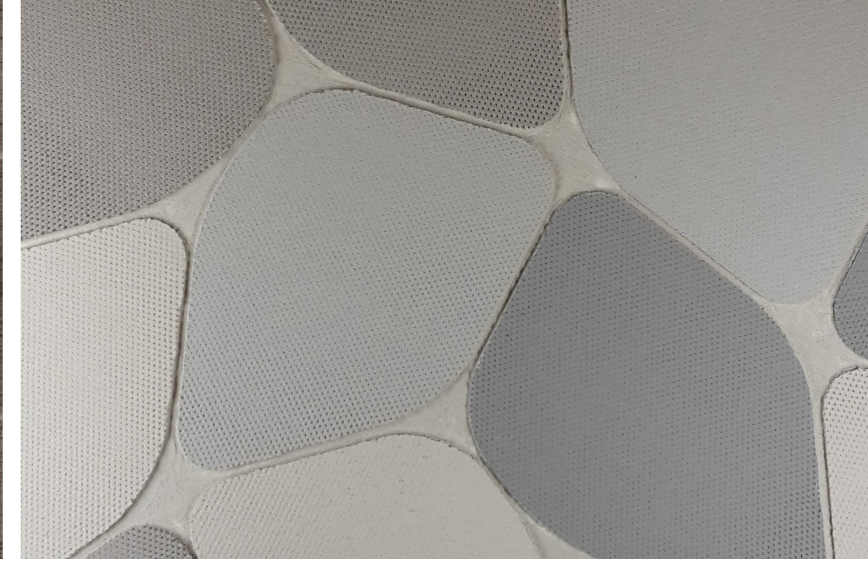
One unique custom finish, many options

Whether you design a building with a rainscreen cladding, stucco or continuous insulation systems, Sto-Ecoshapes can be used as the finish layer and give your design a unique look.



Lamina layer of Sto-Ecoshapes that can go over a wide variety of substrates and can be incorporated in numerous wall cladding systems.

Note: All details shown in this brochure are not dimensionally accurate. The applicator/customer is solely responsible for determining the suitability and completeness of the products used for the respective construction project. All specifications and information are project specific and this brochure does not constitute work, detail, or installation plans. The technical specifications and product information included in the Technical Data Sheets and system descriptions/approvals must be observed.



Sto Corp.

3800 Camp Creek Parkway
Building 1400, Suite 120
Atlanta, GA 30331
Phone 404-346-3666
Toll Free 1-800-221-2397
Fax 404-346-3119
www.stocorp.com

Sto Canada Ltd.

Sales Centre Toronto
1821 Albion Road
Unit 1-2
Etobicoke, ON
M9W 5W8
Phone 416-855-0460
www.stocanada.com

ATTENTION

Sto products are intended for use by qualified professional contractors, not consumers, as a component of a larger construction assembly as specified by a qualified design professional, general contractor or builder. They should be installed in accordance with those specifications and Sto's instructions. Sto Corp. disclaims all, and assumes no, liability for on-site inspections, for its products applied improperly, or by unqualified persons or entities, or as part of an improperly designed or constructed building, for the nonperformance of adjacent building components or assemblies, or for other construction activities beyond Sto's control. Improper use of Sto products or use as part of an improperly designed or constructed larger assembly or building may result in serious damage to this product, and to the structure of the building or its components. **STO CORP. DISCLAIMS ALL WARRANTIES EXPRESSED OR IMPLIED EXCEPT FOR EXPLICIT LIMITED WRITTEN WARRANTIES ISSUED TO AND ACCEPTED BY BUILDING OWNERS IN ACCORDANCE WITH STO'S WARRANTY PROGRAMS WHICH ARE SUBJECT TO CHANGE FROM TIME TO TIME.** For the fullest, most current information on proper application, clean-up, mixing and other specifications and warranties, cautions and disclaimers, please refer to the Sto Corp. website, www.stocorp.com.