



## **Sto-Ecoshapes Vintage** Prefabricated Render Finish Shapes

## The brick of the future, now: Thin, lightweight and durable.

The perfect combination for functional and decorative facade design

**Sto-Ecoshapes Vintage is a highly customizable and versatile finish that can be used in a variety of cladding systems in both new and existing construction.**

Whether designing a building using a rainscreen system, continuous insulation or stucco, Sto-Ecoshapes Vintage is the ideal solution when the project calls for either a traditional or customized "classic" look. The product is easily applied at the jobsite, but is also suitable for use in offsite construction -- serving as a finishing component in the creation of manufactured pre-fabricated panels such as those from Sto Panel Technology. Sto-Ecoshapes Vintage is ideal for restoration; colors and surface textures can be matched to existing facade designs or used to realize individual creative concepts.

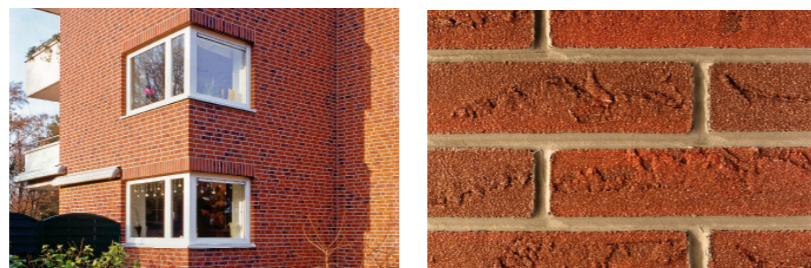
### Sto-Ecoshapes Vintage at a glance

- Beautiful natural brick appearance
- Proven performance with over 20 years of project use
- Project-specific colors, patterns and textures



Creating something special – render, paint and Sto-Ecoshapes Vintage in perfect combination

There are nearly endless possibilities for customized design. By using Sto-Ecoshapes Vintage together with StoTherm ci, it is possible to combine thermal insulation with the appearance of a traditional brick facade and add design accents to any building.

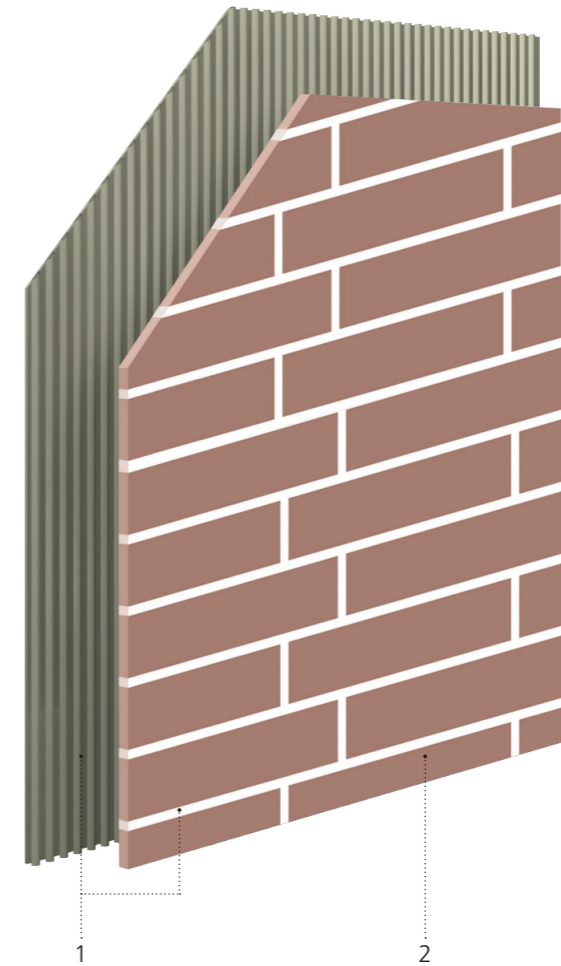


## Transform any façade with Sto-Ecoshapes Vintage.

The beauty of brick without the hassle

**Made from high-quality raw materials, Sto-Ecoshapes Vintage will transform your façade into a stunning, one-of-a-kind design. The hand-finished, pre-fabricated shapes can be tailored to match your requirements for color, size and texture, offering virtually unlimited design possibilities.**

Bonding instead of bricklaying: the extremely lightweight Sto-Ecoshapes Vintage elements are not laid like bricks, but are instead bonded to the substrate. This opens up a diverse range of design options - from recreating the appearance of brickwork to originating unique artistic designs. This versatile and highly expressive building material is compelling because of its natural characteristics and timeless appeal.



- 1 Bonding and pointing mortar
- 2 Sto-Ecoshapes Vintage

### All benefits at a glance

- A lasting finish: lightweight and durable
- Minimal maintenance
- Greatly reduces the risk of efflorescence
- Seamless facade design
- Maximum impact resistance and special protection against weathering
- Easy to install
- Precision fit using lintel and corner shapes
- Expert advice on color designs and overall concepts from Sto Studio
- Nearly unlimited choice of colors, textures, formats with special orders upon request

# Wide range of looks and design options.

Our Sto-Ecoshapes Vintage colors at a glance

With more than 300 standard colors, our large selection of Sto-Ecoshapes Vintage elements works with any building style. Whether the design calls for a modern, traditional or rustic design, Sto-Ecoshapes Vintage is both classic and contemporary.

In addition to the examples shown, custom colors and textures are available upon request.



Standard color 2079 B



Standard color 7510a



Standard color 2080 B



Standard color 2083 B



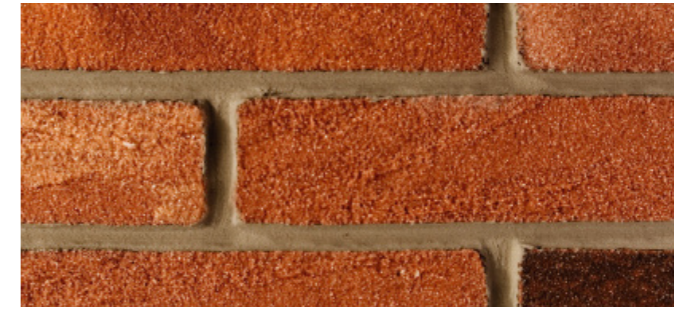
Standard color 2029



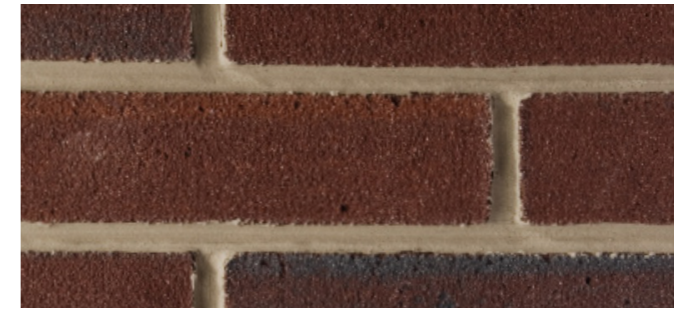
Special color 1141



Special color 1147



Special color 1171



Special color 1053



Special color 1275



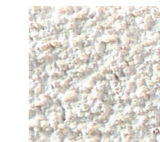
Standard color 7614



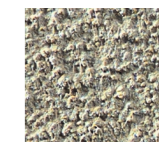
Special color 11402

### Sto-Bonding and Pointing Mortar

Nine different colors ensure a harmonious appearance and diverse scope for accenting facade highlights.



White (2056 A)



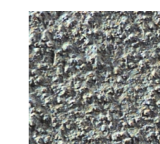
Sand yellow (2062 A)



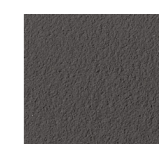
Anthracite (2057 A)



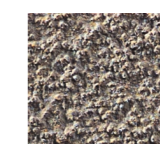
Brown (2064 A)



Grey (2060 A)



Graphite (2061 A)



Brown-grey (2063 A)



Cement-grey (2058 A)



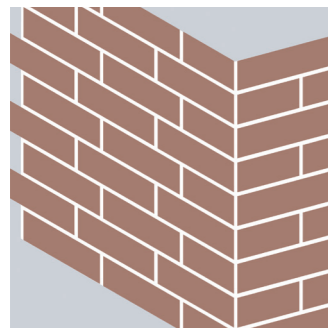
Light grey (2059 A)

Product colors shown in digital and print are for representation only. Actual colors will vary. For accurate color samples, please visit [www.sto.ca](http://www.sto.ca) or contact a Sto sales representative.

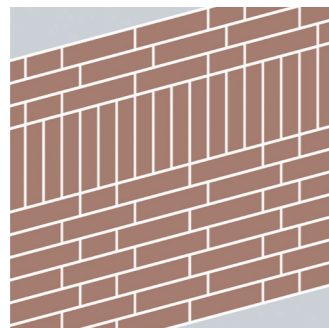
# Special façade highlights.

Turn any building into something special

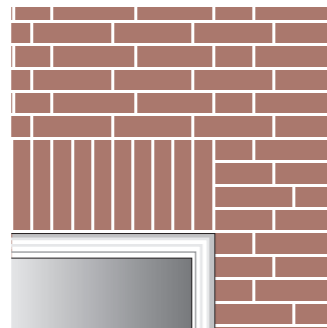
Formats and special solutions				
	Sto-Ecoshapes Vintage	Sto-Ecoshapes Vintage Corner 4/4 (angular piece with half-brick and 3/4 stretcher brick)	Sto-Ecoshapes Vintage Corner 4/4 (angular piece with half-brick and 4/4 stretcher brick)	Sto-Ecoshapes Vintage Lintel
Format I				
Format II				
Format III				



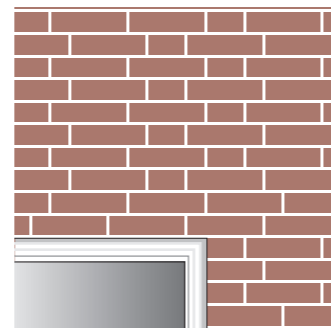
Building corner



Decorative mixed patterns



Window lintel with soldier course



Window lintel

# Application of Sto-Ecoshapes Vintage.

As easy as it gets

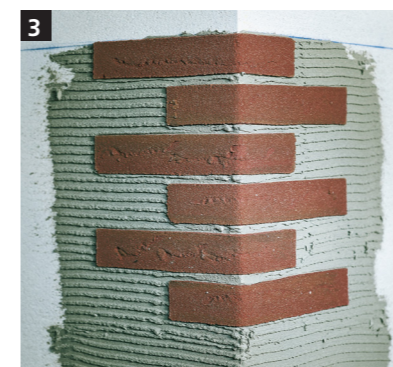
The following steps show how to apply Sto-Ecoshapes Vintage. Do not hesitate to contact your Sto sales representative for more information.



1 First, precisely measure the application area and mark the height divisions using a chalk line.



2 Apply Sto-Bonding and Pointing Mortar using a 6 x 6 mm notched trowel, starting with the corner area.



3 Firmly embed the Sto-Ecoshapes Vintage Corner in the mortar, offset in 2-4 courses.



4 Ensure that the line is secured at eye level to achieve an accurate joint pattern. Press each element into the mortar so it is fully embedded.



5 Smooth the joints with a damp, flat brush. Ensure that the elements are fully embedded in the mortar on all sides.

### TIP

Precise measuring of the application area is required for an accurate application of Sto-Ecoshapes Vintage. Transferring the height of all facade openings to the vertical height division using a spirit level is recommended. The individual elements have slight color variations due to the manufacturing process. To compensate for this, mix elements from different boxes.

**Sto Corp.**

3800 Camp Creek Parkway  
Building 1400, Suite 120  
Atlanta, GA 30331  
Phone 404-346-3666  
Toll Free 1-800-221-2397  
Fax 404-346-3119  
www.stocorp.com

**Sto Canada Ltd.**

Sales Centre Toronto  
1821 Albion Road  
Unit 1-2  
Etobicoke, ON  
M9W 5W8  
Phone 416-855-0460  
www.stocanada.com

**ATTENTION**

Sto products are intended for use by qualified professional contractors, not consumers, as a component of a larger construction assembly as specified by a qualified design professional, general contractor or builder. They should be installed in accordance with those specifications and Sto's instructions. Sto Corp. disclaims all, and assumes no, liability for on-site inspections, for its products applied improperly, or by unqualified persons or entities, or as part of an improperly designed or constructed building, for the nonperformance of adjacent building components or assemblies, or for other construction activities beyond Sto's control. Improper use of Sto products or use as part of an improperly designed or constructed larger assembly or building may result in serious damage to this product, and to the structure of the building or its components. **STO CORP. DISCLAIMS ALL WARRANTIES EXPRESSED OR IMPLIED EXCEPT FOR EXPLICIT LIMITED WRITTEN WARRANTIES ISSUED TO AND ACCEPTED BY BUILDING OWNERS IN ACCORDANCE WITH STO'S WARRANTY PROGRAMS WHICH ARE SUBJECT TO CHANGE FROM TIME TO TIME.** For the fullest, most current information on proper application, clean-up, mixing and other specifications and warranties, cautions and disclaimers, please refer to the Sto Corp. website, [www.stocorp.com](http://www.stocorp.com).