

FLASH-TITE

B-VENT FLASHINGS

DESCRIPTION & USE

- Pre-formed metal flashings for sealing chimneys or hot pipes to low slope roofing systems.

FLASH-TITE B-VENT FLASHINGS feature a base fabricated from a single piece of spun metal that is free of joints or welds that may leak. The cone shaped design keeps combustible roof deck materials at a safe distance from the chimney while permitting heated air to vent out the top. An adjustable rain collar ensures an effective weatherproof seal, even during differential movement between the roof deck and the pipe.

FEATURES & BENEFITS

Seamless Flashing - Spun from a single piece of metal; there are no weld joints that can crack or leak.

Adjustable Rain Collar - Galvanized steel rain collars can be adjusted to accurately fit the chimney pipe.

Wide Flashing Flange - For a long-lasting watertight seal to the roof membrane.

Compatible - FLASH-TITE B-VENT FLASHINGS are available primer coated for better adhesion to bitumen based roof membranes or uncoated for proper bonding to single ply membranes.

TECHNICAL DATA

Base	
Metal:	Aluminum
Metal Gauge:	1.6 mm (0.064")
Height:	295 mm (11.5")
Flange Width:	95 mm (3.75")

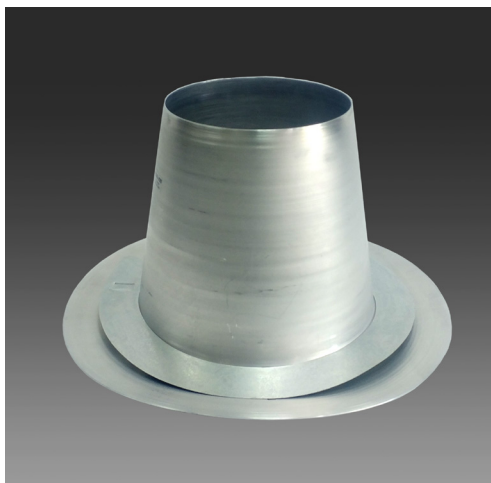
Rain Collar	
Metal:	Galv. Steel
Metal Gauge:	0.6 mm (22 ga.)
Width:	51 mm (2.0")
Fastener:	Stainless Steel Screw

Available Sizes

For Hot Pipe diameters of:

27 mm, 152 mm, 178 mm, 203 mm, 254 mm, 305 mm
(5", 6", 7", 8", 10", 12")

Other sizes available on special order.



INSTALLATION

1. Extend base roofing membrane up to the edge of the hole in the deck.
2. Centre the FLASH-TITE base flange around the chimney.
Note: There should be a clearance between the top of the base flange and the hot pipe.

3. A) If a built-up or modified bitumen roof, flange should be adhered to the base membrane layer with plastic cement. Flashing membrane should then be brought up over the flange to the base of the cone and sealed with an appropriate sealant.

B) If a single ply membrane, adhere the flange to the base membrane with the membrane manufacturer's recommended adhesive. Cut a piece of membrane flashing that is wider than the flange and has a target hole in the centre to fit over the base flange. Apply the target flashing piece as per the membrane manufacturer's directions. If required, wrap the base flange with the membrane manufacturer's flashing.

4. Apply a heavy bead of a non-sagging, heat resistant sealant around the circumference of the chimney pipe, 25 mm (1.0") above the top of the base flange.
5. Slide the rain collar down the pipe so that it is resting on the bead of sealant. Ensure that there is approximately 25 mm (1.0") space between the top of the flange and the collar. Tighten the screw(s) in the rain collar to secure the collar to the chimney.
6. Apply sealant around the rain collar / pipe joint and the expansion joint in the collar. Ensure that the rain collar is watertight.



COMMERCIAL BUILDING PRODUCTS

Ontario & Western Canada 1.800.268.2889 / Quebec & Atlantic 1.800.363.2307

Distr. By/Par Lexsuco 2010 Corporation, 3275 Orlando Drive, Mississauga, ON, L4V 1C5

19082024

FLASH-TITE B-VENT FLASHINGS

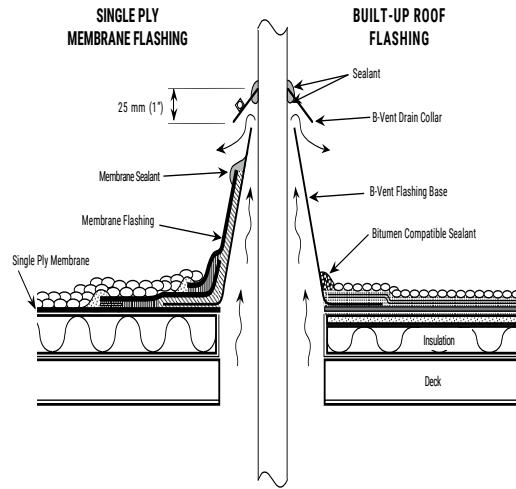


SPECIFICATION

ACCEPTED PRODUCT: FLASH-TITE B-VENT FLASHINGS by Lexsoco Corporation (www.lexsucocorporation.com, Tel: 800.268.2889, E-Mail: info@lexsucocorp.com). Install in accordance with the manufacturer's directions.

WARRANTY

This product's lifetime warranty ensures it remains free from manufacturing defects and will perform its intended function throughout the entire lifespan of the roofing system.



COMMERCIAL BUILDING PRODUCTS

Ontario & Western Canada 1.800.268.2889 / Quebec & Atlantic 1.800.363.2307

Distr. By/Par Lexsoco 2010 Corporation, 3275 Orlando Drive, Mississauga, ON, L4V 1C5