

DESCRIPTION & USE

LEXCAN HI-TUFF TPO PREFAB DRAIN is a drain and drain flashing that consists of a 60-mil HI-TUFF TPO membrane flashing (target patch), attached to a ready-to-install drain with flange and aluminum downspout.

FEATURES & BENEFITS

Pre-Assembled - for fast and easy installation. No field fabrication required.

Seamless Spun Aluminum - there are no weld joints that can crack or leak.

TECHNICAL DATA

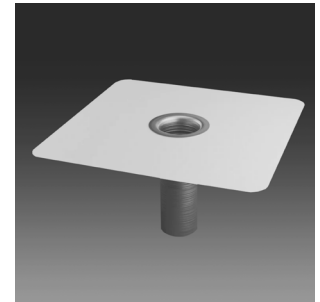
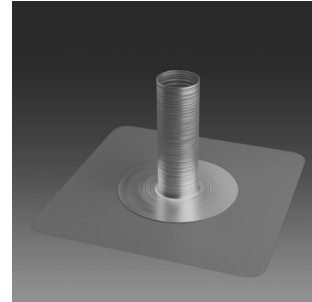
FLASHING	
Material:	Weldable HI-TUFF TPO membrane
Available Thickness:	1.5 mm (60-mil)
Flashing Size:	597 mm x 597 mm (23.5" x 23.5")

Available colours: White, Grey and Tan

DRAIN	
Body Material:	Aluminum flange / aluminum downspout
Aluminum Thickness:	2.03 mm (0.080")
Body Depth:	318 mm (12.5")
Available Drain Sizes:	76 mm (3") - to fit a 70 mm (2.75") nominal drainpipe 102 mm (4") - to fit a 95 mm (3.75") nominal drainpipe 127 mm (5") - to fit a 121 mm (4.75") nominal drainpipe 152 mm (6") - to fit a 146 mm (5.75") nominal drainpipe

PACKAGING

Quantity per Box:	1 unit
Box Weight:	1.6 kg (3.6 lbs)
Quantity per Skid:	40
Skid Weight:	88.9 kg (196 lbs)



INSTALLATION

Note: Prior to installation, ensure the welding surface is clean by using LEXCAN SINGLE PLY MEMBRANE CLEANER.

1. Install the roof insulation and roof membrane, cutting an appropriately sized hole through both materials over the drainpipe.
2. If using a pipe seal, connect it to the drain downspout. Insert the drain downspout into the drainage pipe, ensuring a proper drain-to-pipe seal.
3. When placing the drain flange onto the field, be sure to apply a bead of Waterproofing Mastic on the underside of the drain flange, approximately 12.7 mm (½") to 25.4 mm (1") from the perimeter.
4. The drain shall also be mechanically fastened to the structural deck with insulation screws. Fasten 4 screws 25 mm (1") in from the edge of the flange.
5. Fully weld the membrane flashing (target patch) to the field membrane.
6. Using a seam probe, check all splices for voids and cold welds. Make any needed repairs.
7. Apply cut-edge sealant to exposed membrane edges.