

LEXCOR

LEXBASE R+ 2 IN 1 ROOF COMPOSITE PANEL

DESCRIPTION & USE

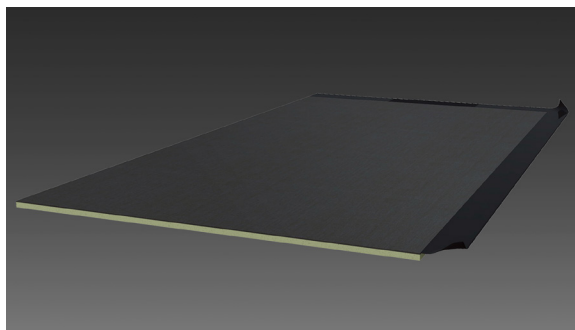
An insulation overlay-protection board composed of a modified bituminous base sheet membrane, factory laminated to a high density polyisocyanurate board. The base sheet membrane is made of either glass fibre mat or heavy duty non-woven polyester, enhanced with glass fiber strands and selected SBS modified bitumen for superior flexibility and stability. This panel includes a 76 mm (3") self-adhesive overlap strip and 38 mm (1 1/2") protective strip.

TECHNICAL DATA

Polyisocyanurate Roofing Board	
Min. requirement as per ASTM C1289 or CAN/ULC S704	
Nominal Thickness:	12.5 mm 0.5"
Thermal Resistant: (ASTM C518)	RSI-0.44 R-2.5
Water Vapour Transmission:	< 1.5 perm < 85.8 ng/Pa·s·m ²
Water Absorption: (ASTM C209) (ASTM C1763) (ASTM D2842)	< 4.0% < 4.0% < 3.5%
Compressive Strength: (ASTM D1621)	90 ¹
Dimensional Stability: (ASTM D2126)	< 0.5%
Tensile Strength: (ASTM C1623)	> 95 kPa > 2000 psf
Smoke Development: (ASTM E84/UL723)	< 450 ²
Flame Spread: (ASTM E84/UL723)	< 75 ²
Service Temperature:	-73°C to 121°C (-100°F to 250°F)

¹551 kPa (80 psi) minimum, up to 758 kPa (110 psi).

²Numerical ratings are not intended to reflect performance under actual fire conditions. Flame spread index of ≤75 and smoke development ≤450 meet code requirements for foam plastic roof insulation. Physical properties listed above are presented as typical average values as determined by referenced ASTM test methods and are subject to normal manufacturing variation.



Type	Width x Length	Total Weight	Total Thickness
95 R+	914 mm x 2438 mm x 12.70 mm (3' x 8' x 1/2")	9 kg (20 lbs)	14.9 mm (0.59")
180 R+	914 mm x 2438 mm x 12.70 mm (3' x 8' x 1/2")	10 kg (22 lbs)	15.7 mm (0.62")
180 R+	914 mm x 4876 mm x 12.70 mm (3' x 16' x 1/2") - fan fold	20 kg (44 lbs)	15.7 mm (0.62")

Base Sheet Membrane	
95 R+	
The base sheet membrane is made of fiberglass reinforcement with a thermofusible surface. The surface is covered with a micro thermofusible poly film for heat welding. The base sheet membrane meets the requirements of CSA A123.23 Type A, Grade 3.	
180 R+	
Base sheet membrane consists of a heavy duty non-woven polyester enhanced with glass fiber strands and selected SBS modified bitumen. The surface is covered with a micro thermofusible poly film for heat welding. The base sheet membrane meets the requirements of CSA A123.23 Type B, Grade 3.	

APPLICATION

LEXBASE R+ is used as an insulation overlay-protection board and base sheet in the roofing system. It can be adhered with selected adhesives, hot asphalt or mechanically fastened. For more information on the securement patterns and proper adhesives please consult your LEXCOR representative.



COMMERCIAL BUILDING PRODUCTS

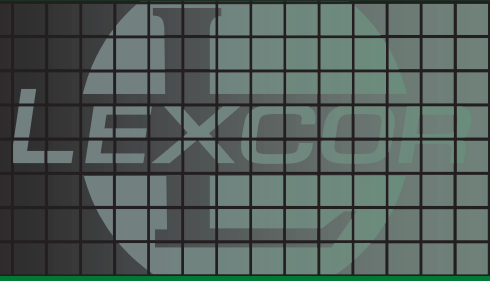
Ontario & Western Canada 1.800.268.2889 / Quebec & Atlantic 1.800.363.2307

Distr. By/Par Lexsucu 2010 Corporation, 3275 Orlando Drive, Mississauga, ON, L4V 1C5

All products manufactured and/or distributed by Lexsucu 2010 Corporation comply with the description and properties specified in the technical data sheet in effect at the date of manufacture and/or publication. Lexsucu 2010 Corporation may change the composition and/or usage of its products without prior notice.

LEXBASE R+

2 IN 1 ROOF COMPOSITE PANEL



APPROVALS & COMPLIANCES

- CAN/ULC S-126M.
- This product is eligible for use in certain CSA A123.21 assemblies.

Composite Panel

Standard 4450/ 4470 under Class 1 for insulated construction of steel, wood, concrete gypsum for 1-60 and 1-90 classifications (high winds) Patent no. 2.001.005.

LEXBASE R+ Panel with Cap Sheet

UL Class C Fully adhered (ref. TGFUC.R16778) CAN/ULC-S107.



TESTED
ACCORDING TO
CSA A123.21
STANDARD



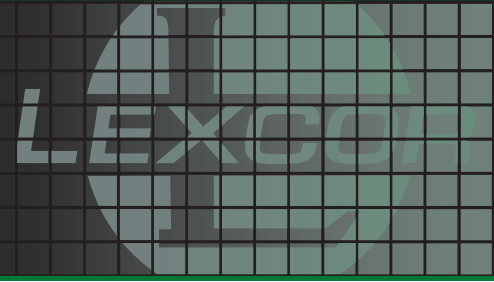
COMMERCIAL BUILDING PRODUCTS

Ontario & Western Canada 1.800.268.2889 / Quebec & Atlantic 1.800.363.2307

Distr. By/Par Lexsucu 2010 Corporation, 3275 Orlando Drive, Mississauga, ON, L4V 1C5

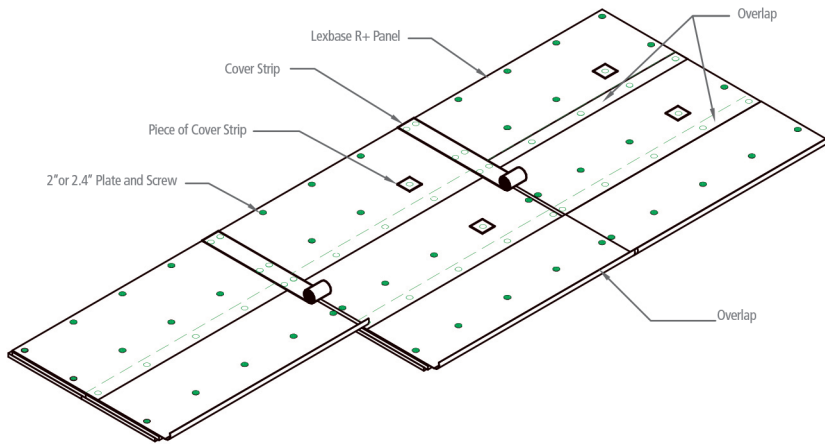
All products manufactured and/or distributed by Lexsucu 2010 Corporation comply with the description and properties specified in the technical data sheet in effect at the date of manufacture and/or publication. Lexsucu 2010 Corporation may change the composition and/or usage of its products without prior notice.

LEXBASE R+ INSTALLATION DIAGRAM FOR MECHANICAL FASTENING

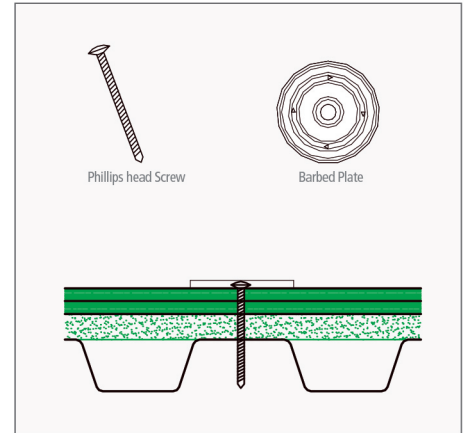


INSTALLATION DIAGRAM FOR MECHANICAL FASTENING

DETAIL #1

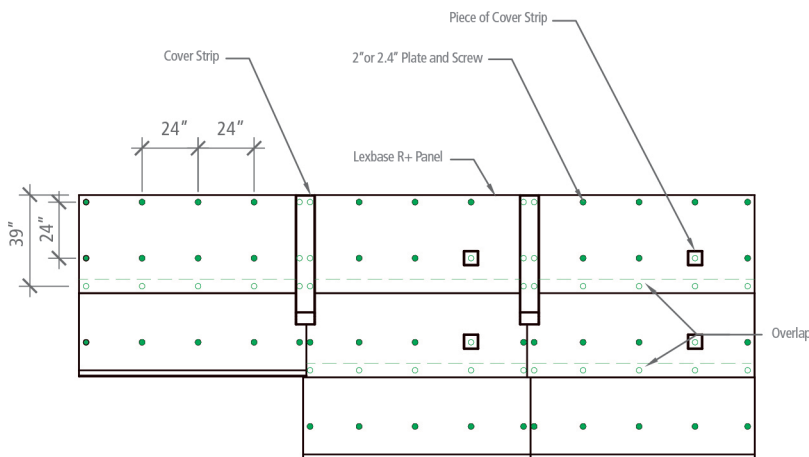


DETAIL #3



Cover Strip is required even if the cap sheet is installed in the same day.

DETAIL #2



Mechanical fasteners must penetrate at least $\frac{3}{4}$ " in steel deck, 25.4 mm (1") in wood deck and $\frac{1}{2}$ " in plywood deck. For steel deck, the fastener must penetrate the deck on the higher part of the flute (see detail 3). Use 50 mm (2") or 60 mm (2.4") barbed steel plates depending on the application. Fasteners should be placed at a minimum 1" of the edge of the panel to provide adequate support.



COMMERCIAL BUILDING PRODUCTS

Ontario & Western Canada 1.800.268.2889 / Quebec & Atlantic 1.800.363.2307

Distr. By/Par Lexsucu 2010 Corporation, 3275 Orlando Drive, Mississauga, ON, L4V 1C5

All products manufactured and/or distributed by Lexsucu 2010 Corporation comply with the description and properties specified in the technical data sheet in effect at the date of manufacture and/or publication. Lexsucu 2010 Corporation may change the composition and/or usage of its products without prior notice.