



UPDATED: 05.16.2014

FR-10/FR-50 FIRE RETARDANT SLIPSHEET

PRODUCT DATA SHEET

DESCRIPTION: FR-10 and FR-50 fire retardant slipsheets enhance the overall fire performance of many conventional commercial roof systems, including metal roofs. FR-10 and FR-50 are coated-glass fiber mats specifically designed for installation over wood decks or certain combustible insulation. FR-50 incorporates a heavier glass mat than FR-10 to provide enhanced fire performance.

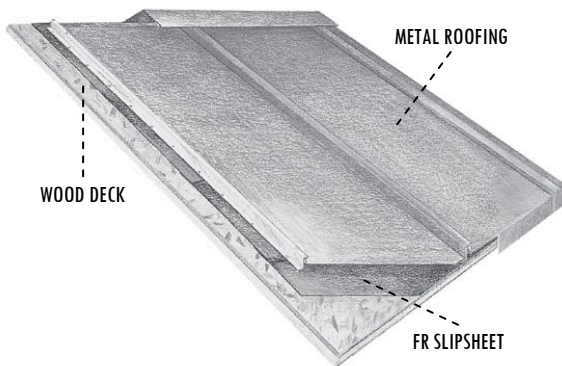
RECOMMENDED USES: FR-10 and FR-50 are specifically formulated for use over wood decks or polystyrene insulation. The proprietary flame-retardant coating and glass-fiber mat provide protection against flame spread and flame penetration through the roof system. The slipsheet can also act as a barrier between chemically incompatible insulation and roof membranes. In addition, the sheet may be used in multiple layers to achieve certain Class A fire resistance ratings.

INSTALLATION: Atlas Fire Retardant Slipsheets are lightweight, easy to handle and, therefore, quicker to install than thermal barriers or coverboards. The slipsheet should be rolled out, overlapping the side and end of the preceding sheet a minimum of two (2) inches. Consult the membrane manufacturer for specific application recommendations (e.g., slipsheet roll direction perpendicular to membrane roll). Mechanical attachment of the slipsheet is not needed in most applications. The patented coating generally provides enough weight to anchor the sheet until the membrane is installed. Mechanical or adhesive attachment may be necessary under windy conditions. Install only as much slipsheet as can be covered by the end of the day.

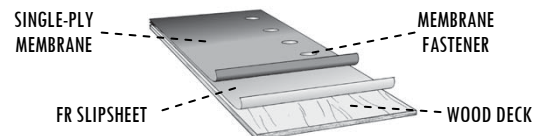
STORAGE: Factory-applied packaging is intended solely for protection during transit. When stored outdoors or on the job site, the slipsheet rolls should be stacked on pallets at least four inches above ground level and completely covered with a weatherproof covering such as a tarpaulin.

WARRANTY AND LIMITATION OF LIABILITY: Other than the aforementioned representations and descriptions, Atlas Roofing Corporation (hereafter, "Seller") makes no other representations or warranties as to the product sold herein. The Seller disclaims all other warranties, express or implied, including the warranty of merchantability and the warranty of fitness for a particular purpose. The Seller shall not be liable for any incidental or consequential damages including the cost of installation, removal, repair or replacement of this product, insulation and/or roof membrane, etc. The Buyer's remedies shall be limited exclusively to, at Seller's option, the repayment of the purchase price or resupply of product manufactured by Atlas in a quantity equal to that of the nonconforming product. Atlas distributors, agents, salespersons, or other independent representatives have no authority to waive or alter the above limitation of liability and remedies.

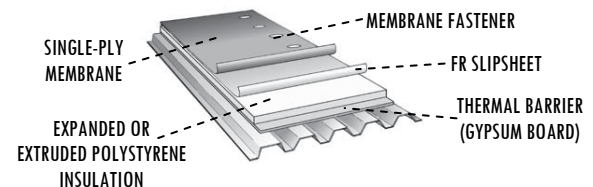
TYPICAL COMBUSTIBLE DECK/METAL ROOF APPLICATION



TYPICAL COMBUSTIBLE DECK APPLICATION



TYPICAL COMBUSTIBLE DECK APPLICATION



STANDARD SIZES

SLIP SHEET	SQUARES PER ROLL	COVERAGE W/2" LAP	ROLL SIZE	ROLL WEIGHT (APPROX.)
FR-10	10 SQUARES (1,000 sq. ft.)	9.64 SQUARES (964 sq. ft.)	48.25"x250" (1225.55mm x 76.2mm)	96 lbs.
FR-50	4.2 SQUARES (420 sq. ft.)	4.02 SQUARES (402 sq. ft.)	48.00"x105" (1219.2mm x 32m)	80 lbs.

TENSILE PROPERTIES

PROPERTY	TEST METHOD	FR-10	FR-50
MACHINE DIRECTION	TAPPI T 1009 om-06	37 lbs./in.	64 lbs./in.
CROSS MACHINE DIRECTION	TAPPI T 1009 om-06	27 lbs./in.	46 lbs./in.

- Superior protection against flame spread and penetration.
- Part of a "Class A" assembly over noncombustible decks and expanded polystyrene.
- A lightweight and easy-to-install roof system component.
- Part of a "Class A" assembly over combustible and noncombustible decks and extruded polystyrene.